

# TOUCH SENSOR

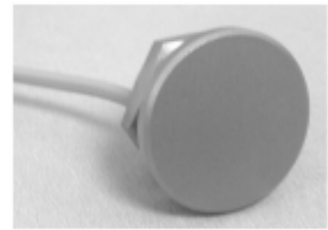


## CT3

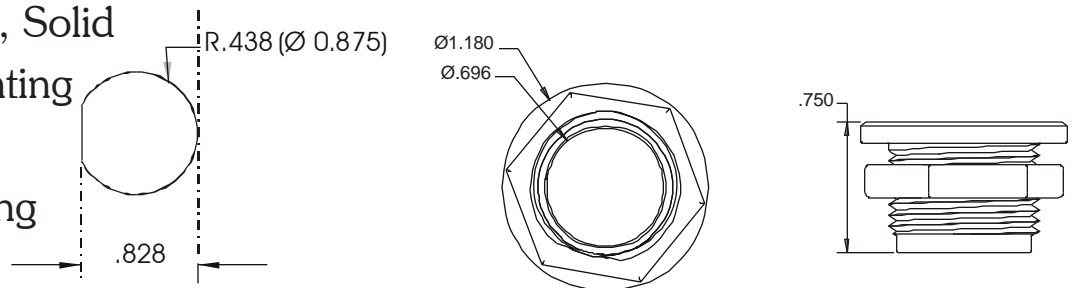
- ◆ 2 Amp
- ◆ **Touch ON**
- ◆ **Touch OFF**
- ◆ **Touch Momentary On**
- ◆ No Moving Parts
- ◆ Vandal Resistant, Solid
- ◆ Thru-Hole Mounting
- ◆ C<sup>2</sup>T Technology
- ◆ Custom Engraving



CT3



CT3-B (blank)



Using a unique C<sup>2</sup>T Technology the G.R.I. Touch Sensor can sense and respond to the slightest human **touch**. The CT3 was developed by G.R.I. to replace mechanical switch applications. The CT3 can be mounted on metallic and non-metallic surfaces. Metal surfaces cannot exceed 1 square foot and cannot be grounded. The CT3 comes in a very cost effective package frequently costing less than the mechanical switch being replaced. Applications include industrial panels, appliance control, access systems, corrections facilities, light switches, elevator buttons, etc. Custom applications are encouraged and welcomed at G.R.I. The CT3-B is blank and can be custom engraved.

### Relay Output

CT3-2-1	12-24VDC, Momentary Touch Sensor, C Form Relay, 2 Amp
CT3-2-3	12-24VDC, Alternate Action Touch Sensor, C Form Relay, 2 Amp

GEORGE RISK INDUSTRIES, INC.  
G.R.I. PLAZA  
KIMBALL, NE 69145



TOLL-FREE 1-800-445-5218  
TOLL-FREE 1-800-523-1227  
(308) 235-4645  
FAX (308) 235-3561  
E-MAIL: [grisales@megavision.com](mailto:grisales@megavision.com)  
WEB SITE: [www.grisk.com](http://www.grisk.com)



# TOUCH SENSOR

## CT3 INSTALLATION INSTRUCTIONS:

Drill a 7/8" hole  
Install Nut and tighten finger tight.

Note: If more secure mounting is required see  
Diagram for D-Hole dimensions.

Insert Switch  
Connect Red Wire to 12 to 24VDC  
Connect Black Wire to Power Ground

Caution: Do Not Mount Switch to Grounded Metal Surface  
Do Not Hook White or Green Wires to AC Type Signal or Source  
Test Switch by Arming Zone and Then Touch Switch.

## CT3-2-X Options

CT3-2-1 Relay normally de-energized: when touched relay energizes: when released relay de-energizes. White is the relay common, green is Normally Closed, & brown Normally Open.

CT3-2-3 Alternate Action: Touch energizes, touch de-energizes. White is the relay common, green is Normally Closed, brown Normally Open.

## SPECIFICATIONS:

Five-wire touch switch, 12-24VDC, ground, common, N/O, N/C  
Touch activated by human hand, gloves can be worn, or metal conductor.  
Low Current Draw.  
Output rated to 2 amp  
New, advanced C<sup>2</sup>T technology.

Caution: Do Not Mount On A Grounded Metal Surface!

Input—	Voltage	: 12 to 24VDC maximum	Relay—	Voltage	: 25 volts DC maximum
	Current	: 28 mA maximum		Current	: 2 amp
				Power	: 50 watts

## WARRANTY:

One year warranty against workmanship, material and factory defects

GEORGE RISK INDUSTRIES, INC.  
G.R.I. PLAZA  
KIMBALL, NE 69145



MADE IN U.S.A.

TOLL-FREE 1-800-445-5218

TOLL-FREE 1-800-523-1227

(308) 235-4645

FAX (308) 235-3561

E-MAIL: [grisales@megavision.com](mailto:grisales@megavision.com)

WEB SITE: [www.grisk.com](http://www.grisk.com)