

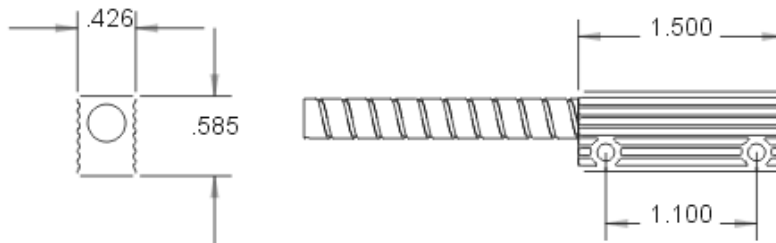
## 4460 Series Miniature Aluminum Commercial Surface Mount Switch Set



4460 Series Miniature Aluminum Commercial Switch Set

- Wide Gap Standard 1"+
- Miniature Size 1.5" L x 5/8" W
- Heavy Duty Extruded Aluminum
- Available with 18" Jacketed Or Armored Cable
- Closed Loop, Open Loop, SPDT
- Recommended For Institutional Use

A robust working gap and mounting versatility make the G.R.I. 4460 a top choice where good looks and adaptation to a rough environment are required.



4460 Series Miniature Aluminum Commercial Switch Set

# MINIATURE ALUMINUM COMMERCIAL SWITCH SET



## 4460 SERIES

- ◆ Wide Gap Standard at 1" Plus
- ◆ Miniature Size 1.5" L x 5/8" W
- ◆ Heavy Duty Extruded Aluminum
- ◆ Available With 18" Jacketed Or Armored Cable
- ◆ Custom Lead Lengths Available
- ◆ Closed Loop, Open Loop, SPDT, & DPDT
- ◆ Recommended For Institutional Use

The G.R.I. 4460 Series is a compact, nice looking and extremely rugged switch set offered with or without armored cable that looks like it belongs when installed and not added as an after thought.

The 4460 Series switch sets are resistant to nuisance vandalism and will blend in to the friendlier and more decorative atmosphere of today's institution whether it be health care or an educational facility.

A robust working gap and mounting versatility make the G.R.I. 4460 a top choice where good looks and adaptation to a rough environment are required.



4460A

| <b>PART NUMBERS:</b> | <b>Closed Loop</b> | <b>Open Loop</b> | <b>SPDT</b>   | <b>DPDT</b>   |
|----------------------|--------------------|------------------|---------------|---------------|
| Standard Gap 1"      | 4460<br>4460A      |                  | 4462<br>4462A | 4463<br>4463A |
| Standard Gap 3/4" +  |                    | 4461<br>4461A    |               |               |

GEORGE RISK INDUSTRIES, INC.  
G.R.I. PLAZA  
KIMBALL, NE 69145



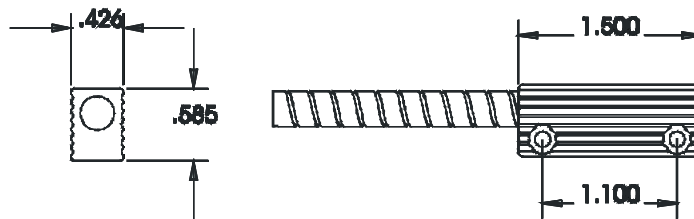
TOLL-FREE 1-800-445-5218  
TOLL-FREE 1-800-523-1227  
(308) 235-4645  
FAX (308) 235-3561  
E-MAIL: [grisales@megavision.com](mailto:grisales@megavision.com)  
WEB SITE: [www.grisk.com](http://www.grisk.com)



# MINIATURE ALUMINUM COMMERCIAL SWITCH SET

## APPLICATION:

The G.R.I. 4460 series of contacts are miniature, low profile, extruded aluminum switches intended for installations in commercial and industrial applications where a rugged, encapsulated wide gap contact is required. Ideal for institutional use such as hospitals, schools, minimum detention facilities, etc. The 4460 and 4460A both offer the installer a 1" + working gap for loose fitting doors, gates, etc. Available in Closed Loop, Open Loop, SPDT and DPDT, this series of contacts can be purchased with 18" of jacketed wire leads or armored cable. Since the 4460 series is polarity sensitive, the poles are printed on the magnet case to indicate mounting direction. Mounting hardware and spacers provided with switch set. Optional S-44 mounting bracket sold separately.



4460A

## GRI products meet or exceed these minimum general specifications:

| PART NUMBER | LOOP TYPE   | ELECTRICAL CONFIG. | REED FORM | MAXIMUM INITIAL CONTACT RESISTANCE (Ω) | MAXIMUM CONTACT RATING (W) | MAXIMUM SWITCHING VOLTAGE (VDC) | MAXIMUM SWITCHING CURRENT (A) |
|-------------|-------------|--------------------|-----------|--|----------------------------|---------------------------------|-------------------------------|
| 4460        | Closed      | N/O                | A         | .150                                   | 10                         | 200                             | .500                          |
| 4460A       | Closed      | N/O                | A         | .150                                   | 10                         | 200                             | .500                          |
| 4461        | Open        | N/C                | B         | .140                                   | 5                          | 175VDC                          | .250                          |
| 4461A       | Open        | N/C                | B         | .140                                   | 5                          | 175VDC                          | .250                          |
| 4462        | Open/Closed | SPDT               | C         | .140                                   | 5                          | 175VDC                          | .250                          |
| 4462A       | Open/Closed | SPDT               | C         | .140                                   | 5                          | 175VDC                          | .250                          |
| 4463        | Open/Closed | DPDT               | Cx2       | .140                                   | 5                          | 175VDC                          | .250                          |
| 4463A       | Open/Closed | DPDT               | Cx2       | .140                                   | 5                          | 175VDC                          | .250                          |

## WARRANTY:

Lifetime warranty against workmanship, material and factory defects.

GEORGE RISK INDUSTRIES, INC.  
GR.I. PLAZA  
KIMBALL, NE 69145



MADE IN U.S.A.

TOLL-FREE 1-800-445-5218  
TOLL-FREE 1-800-523-1227  
(308) 235-4645

FAX (308) 235-3561

E-MAIL: [grisales@megavision.com](mailto:grisales@megavision.com)

WEB SITE: [www.grisk.com](http://www.grisk.com)